

ⅣA 決算額の科目別順位(目的別)市町村名 **注意:S60の数値はダミーです。そのまま数値を上書きください。**

単位:百万円

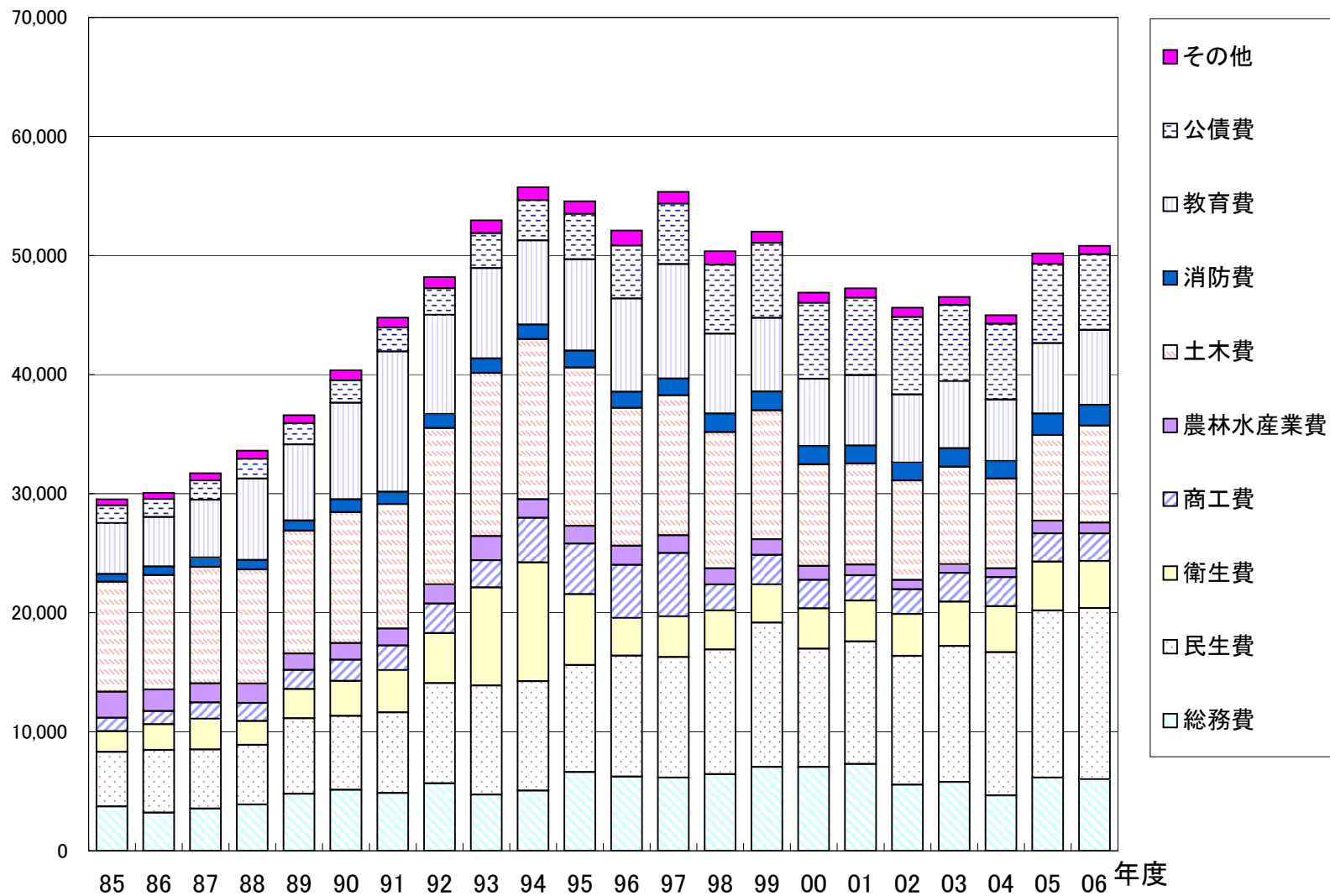
年度	S60	S61	S62	S63	H1	H2	H3	H4	H5	H6	H7	H8	H9	H10	H11	H12	H13	H14	H15	H16	H17	H18
区分	85	86	87	88	89	90	91	92	93	94	95	96	97	98	99	00	01	02	03	04	05	06
総務費	3,717	3,206	3,550	3,880	4,785	5,119	4,845	5,667	4,707	5,046	6,604	6,235	6,131	6,424	7,049	7,053	7,301	5,558	5,775	4,661	6,138	6,013
民生費	4,579	5,265	4,964	5,017	6,345	6,224	6,780	8,423	9,179	9,204	8,991	10,151	10,136	10,481	12,115	9,917	10,275	10,800	11,432	12,017	14,052	14,380
衛生費	1,753	2,168	2,564	1,998	2,454	2,925	3,543	4,192	8,242	9,964	5,971	3,169	3,426	3,275	3,196	3,390	3,445	3,518	3,724	3,857	4,099	3,943
商工費	1,136	1,100	1,387	1,523	1,612	1,791	2,077	2,496	2,265	3,760	4,238	4,474	5,328	2,196	2,496	2,393	2,113	2,081	2,406	2,453	2,370	2,334
農林水産	2,175	1,806	1,596	1,613	1,365	1,394	1,416	1,584	2,032	1,553	1,484	1,599	1,472	1,347	1,308	1,165	904	798	733	733	1,064	903
土木費	9,240	9,607	9,782	9,612	10,332	10,999	10,449	13,138	13,712	13,461	13,291	11,567	11,768	11,450	10,829	8,532	8,483	8,350	8,181	7,544	7,193	8,147
消防費	652	720	779	780	860	1,080	1,051	1,187	1,207	1,212	1,426	1,368	1,409	1,562	1,576	1,551	1,529	1,502	1,556	1,465	1,809	1,725
教育費	4,257	4,169	4,867	6,830	6,372	8,104	11,770	8,315	7,603	7,063	7,686	7,826	9,601	6,700	6,202	5,647	5,900	5,722	5,627	5,173	5,906	6,306
公債費	1,507	1,514	1,622	1,690	1,783	1,860	2,012	2,247	2,935	3,387	3,806	4,439	5,083	5,798	6,284	6,389	6,507	6,512	6,410	6,368	6,660	6,365
その他	515	519	609	667	690	859	838	944	1,064	1,094	1,070	1,273	998	1,128	953	856	797	772	688	723	884	704
歳出合計	29,531	30,074	31,720	33,610	36,598	40,355	44,781	48,193	52,946	55,744	54,567	52,101	55,352	50,361	52,008	46,893	47,254	45,613	46,532	44,994	50,175	50,820

年度	S60	S61	S62	S63	H1	H2	H3	H4	H5	H6	H7	H8	H9	H10	H11	H12	H13	H14	H15	H16	H17	H18
区分	85	86	87	88	89	90	91	92	93	94	95	96	97	98	99	00	01	02	03	04	05	06
総務費	12.6%	10.7%	11.2%	11.5%	13.1%	12.7%	10.8%	11.8%	8.9%	9.1%	12.1%	12.0%	11.1%	12.8%	13.6%	15.0%	15.5%	12.2%	12.4%	10.4%	12.2%	11.8%
民生費	15.5%	17.5%	15.6%	14.9%	17.3%	15.4%	15.1%	17.5%	17.3%	16.5%	16.5%	19.5%	18.3%	20.8%	23.3%	21.1%	21.7%	23.7%	24.6%	26.7%	28.0%	28.3%
衛生費	5.9%	7.2%	8.1%	5.9%	6.7%	7.2%	7.9%	8.7%	15.6%	17.9%	10.9%	6.1%	6.2%	6.5%	6.1%	7.2%	7.3%	7.7%	8.0%	8.6%	8.2%	7.8%
商工費	3.8%	3.7%	4.4%	4.5%	4.4%	4.4%	4.6%	5.2%	4.3%	6.7%	7.8%	8.6%	9.6%	4.4%	4.8%	5.1%	4.5%	4.6%	5.2%	5.5%	4.7%	4.6%
農林水産	7.4%	6.0%	5.0%	4.8%	3.7%	3.5%	3.2%	3.3%	3.8%	2.8%	2.7%	3.1%	2.7%	2.7%	2.5%	2.5%	1.9%	1.7%	1.6%	1.6%	2.1%	1.8%
土木費	31.3%	31.9%	30.8%	28.6%	28.2%	27.3%	23.3%	27.3%	25.9%	24.1%	24.4%	22.2%	21.3%	22.7%	20.8%	18.2%	18.0%	18.3%	17.6%	16.8%	14.3%	16.0%
消防費	2.2%	2.4%	2.5%	2.3%	2.3%	2.7%	2.3%	2.5%	2.3%	2.2%	2.6%	2.6%	2.5%	3.1%	3.0%	3.3%	3.2%	3.3%	3.3%	3.3%	3.6%	3.4%
教育費	14.4%	13.9%	15.3%	20.3%	17.4%	20.1%	26.3%	17.3%	14.4%	12.7%	14.1%	15.0%	17.3%	13.3%	11.9%	12.0%	12.5%	12.5%	12.1%	11.5%	11.8%	12.4%
公債費	5.1%	5.0%	5.1%	5.0%	4.9%	4.6%	4.5%	4.7%	5.5%	6.1%	7.0%	8.5%	9.2%	11.5%	12.1%	13.6%	13.8%	14.3%	13.8%	14.2%	13.3%	12.5%
その他	1.7%	1.7%	1.9%	2.0%	1.9%	2.1%	1.9%	2.0%	2.0%	2.0%	2.0%	2.4%	1.8%	2.2%	1.8%	1.8%	1.7%	1.7%	1.5%	1.6%	1.8%	1.4%
歳出合計	100.0%	100.0%	100.0%	100.0%	100.0%	100.0%	100.0%	100.0%	100.0%	100.0%	100.0%	100.0%	100.0%	100.0%	100.0%	100.0%	100.0%	100.0%	100.0%	100.0%	100.0%	100.0%

★入力の際注意 黄色の入力セル。ここに数値を入力してください。
 青色のセルには関数等が入っていますので、入力等しないでください。

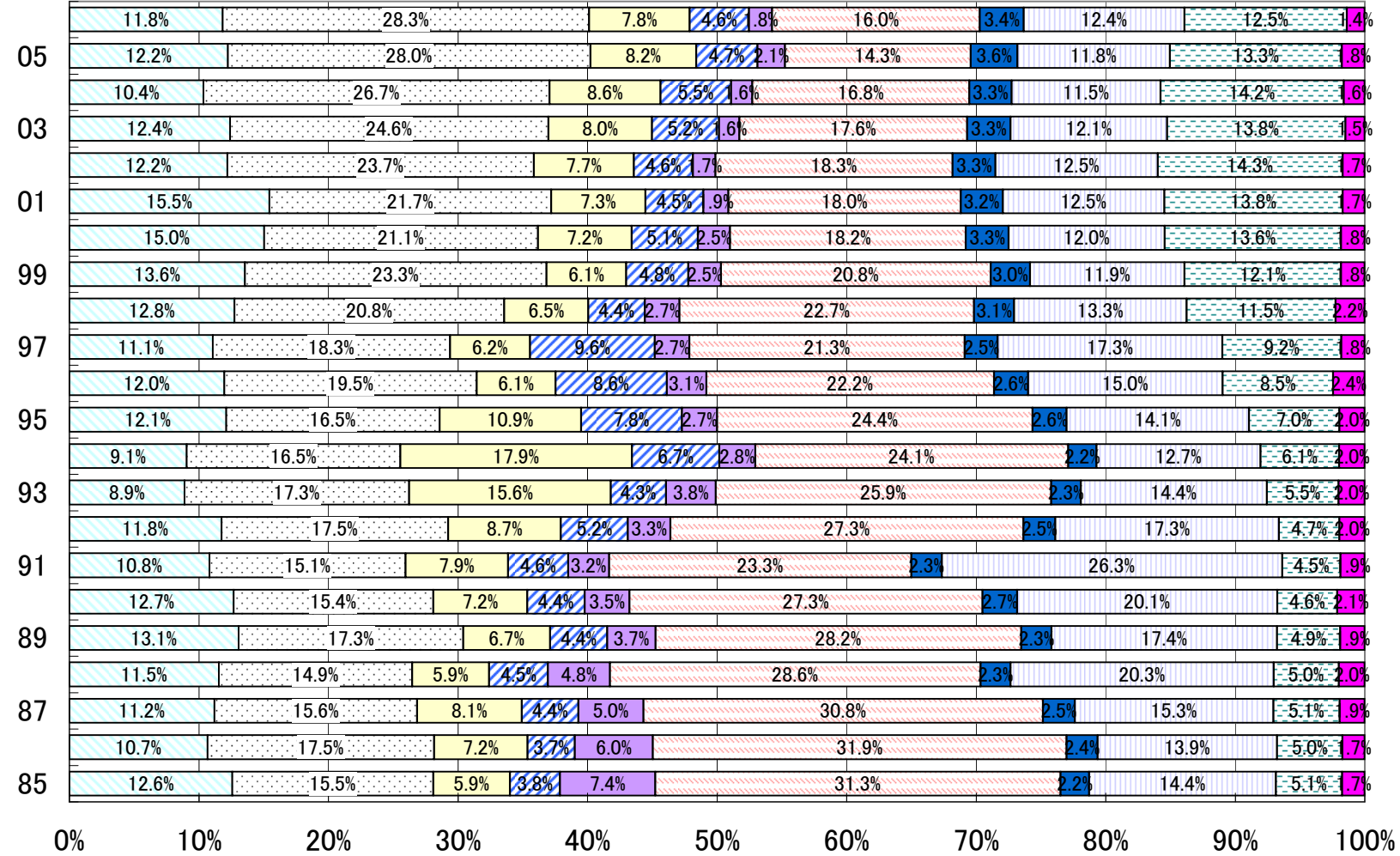
IVA-2 目的別歳出構成額の推移

百万円



IVA-3 決算額比率の推移(目的別)

年度



総務費
 民生費
 衛生費
 商工費
 農林水産業費
 土木費
 消防費
 教育費
 公債

ⅢA. 歳入決算額の構成額(比)の推市町村名

注意: S60の数値はダミーです。そのまま数値を上書きください。

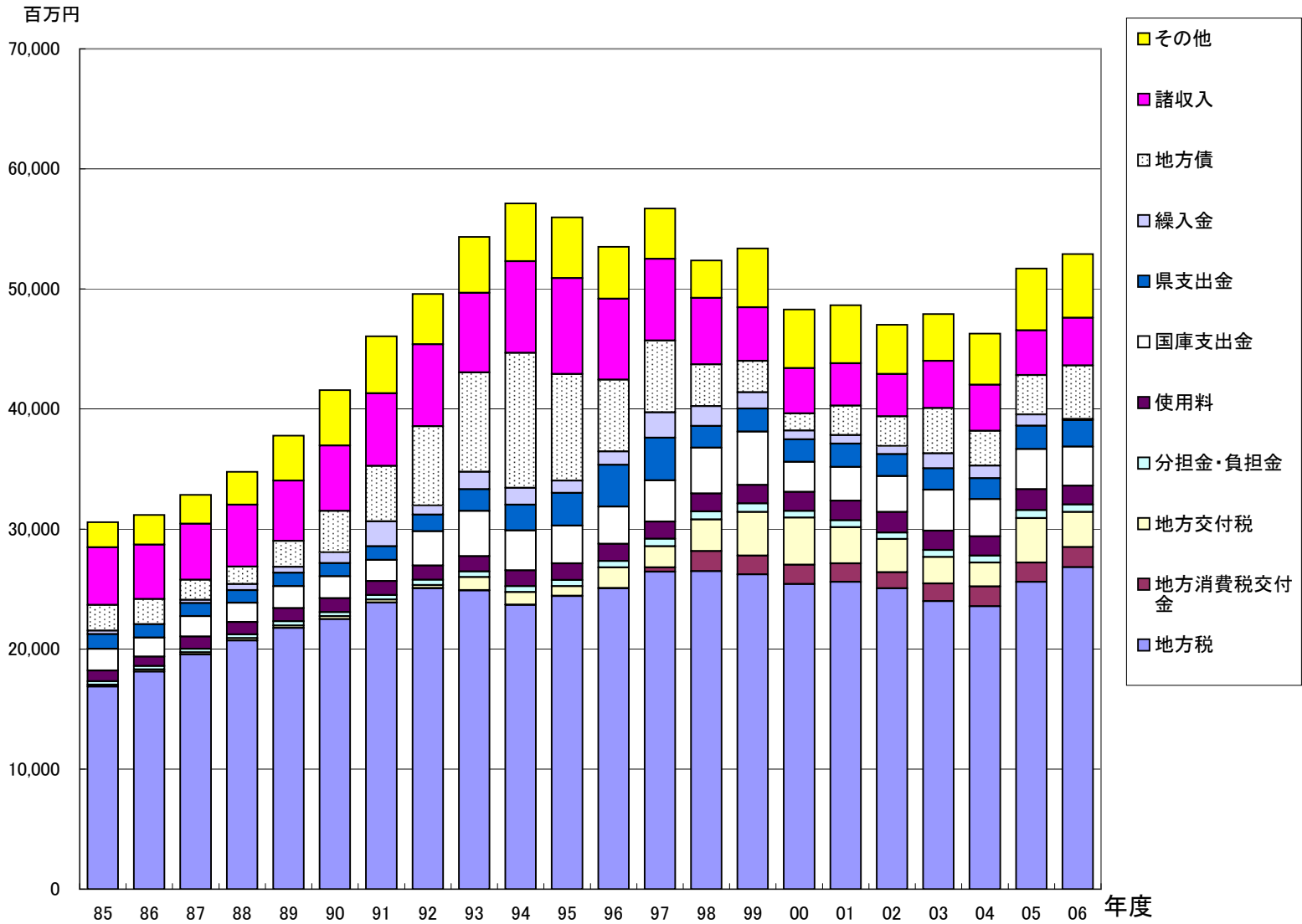
単位: 百万円

年度	S60	S61	S62	S63	H1	H2	H3	H4	H5	H6	H7	H8	H9	H10	H11	H12	H13	H14	H15	H16	H17	H18
区分	85	86	87	88	89	90	91	92	93	94	95	96	97	98	99	00	01	02	03	04	05	06
地方税	16,879	18,129	19,557	20,718	21,749	22,497	23,877	25,053	24,875	23,674	24,403	25,050	26,433	26,494	26,213	25,407	25,601	25,063	23,984	23,572	25,592	26,821
地方消費	0	0	0	0	0	0	10	25	26	27	25	23	376	1,664	1,567	1,616	1,523	1,329	1,467	1,633	1,599	1,683
地方交付	156	161	170	184	218	239	242	253	1,088	1,046	814	1,728	1,756	2,632	3,636	3,937	3,032	2,777	2,220	1,989	3,711	2,923
分担金・費	271	292	300	324	349	342	372	432	474	493	515	532	630	681	713	554	562	535	570	580	662	609
使用料	904	790	1012	1031	1098	1159	1156	1193	1277	1324	1381	1434	1419	1480	1539	1583	1647	1707	1612	1614	1753	1567
国庫支出	1,808	1,587	1,694	1,601	1,817	1,837	1,766	2,856	3,770	3,305	3,149	3,108	3,440	3,833	4,448	2,501	2,806	2,987	3,411	3,106	3,342	3,251
県支出金	1,219	1,117	1,107	1,053	1,119	1,086	1,140	1,391	1,796	2,156	2,724	3,463	3,544	1,792	1,905	1,858	1,945	1,837	1,790	1,727	1,951	2,212
繰入金	300	0	250	500	500	900	2,070	760	1,450	1,400	1,010	1,114	2,115	1,652	1,372	736	696	682	1,253	1,060	936	101
地方債	2,134	2,092	1,693	1,464	2,155	3,444	4,629	6,599	8,296	11,242	8,890	5,982	5,981	3,495	2,608	1,432	2,469	2,462	3,775	2,904	3,274	4,467
諸収入	4,801	4,535	4,658	5,150	5,018	5,451	6,031	6,832	6,615	7,640	7,977	6,736	6,818	5,531	4,458	3,775	3,525	3,542	3,920	3,822	3,718	3,953
その他	2,104	2,465	2,416	2,751	3,764	4,612	4,765	4,191	4,670	4,827	5,066	4,333	4,191	3,111	4,911	4,881	4,837	4,098	3,916	4,273	5,160	5,328
歳入合計	30,576	31,168	32,857	34,776	37,787	41,567	46,058	49,585	54,337	57,134	55,954	53,503	56,703	52,365	53,370	48,280	48,643	47,019	47,918	46,280	51,698	52,915

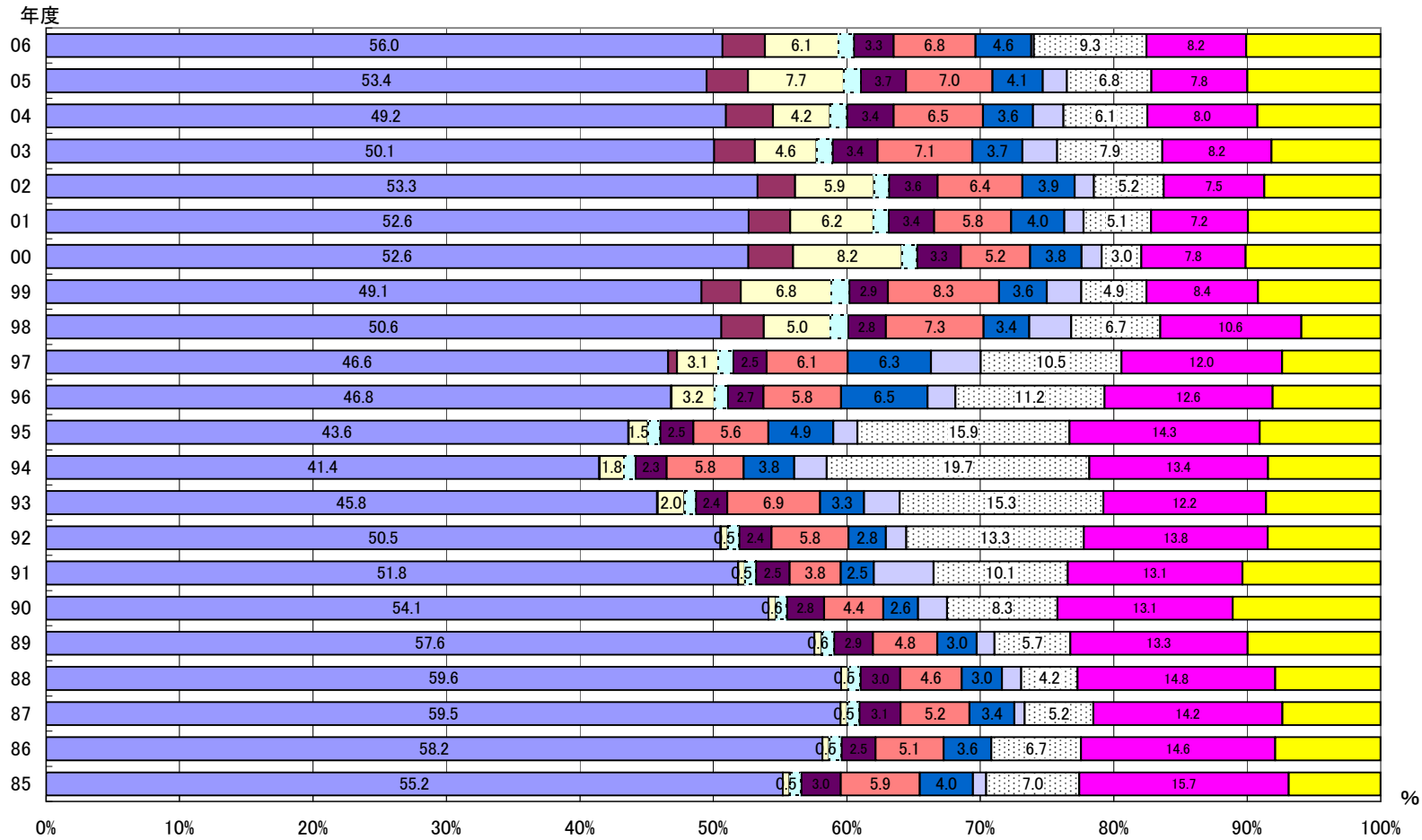
年度	S60	S61	S62	S63	H1	H2	H3	H4	H5	H6	H7	H8	H9	H10	H11	H12	H13	H14	H15	H16	H17	H18
区分	85	86	87	88	89	90	91	92	93	94	95	96	97	98	99	00	01	02	03	04	05	06
地方税	55.2	58.2	59.5	59.6	57.6	54.1	51.8	50.5	45.8	41.4	43.6	46.8	46.6	50.6	49.1	52.6	52.6	53.3	50.1	49.2	53.4	56.0
地方消費	0.0	0.0	0.0	0.0	0.0	0.0	0.0	0.1	0.0	0.0	0.0	0.0	0.7	3.2	2.9	3.3	3.1	2.8	3.1	3.4	3.3	3.5
地方交付	0.5	0.5	0.5	0.5	0.6	0.6	0.5	0.5	2.0	1.8	1.5	3.2	3.1	5.0	6.8	8.2	6.2	5.9	4.6	4.2	7.7	6.1
分担金・費	0.9	0.9	0.9	0.9	0.9	0.8	0.8	0.9	0.9	0.9	0.9	1.0	1.1	1.3	1.3	1.1	1.2	1.1	1.2	1.2	1.4	1.3
使用料	3.0	2.5	3.1	3.0	2.9	2.8	2.5	2.4	2.4	2.3	2.5	2.7	2.5	2.8	2.9	3.3	3.4	3.6	3.4	3.4	3.7	3.3
国庫支出	5.9	5.1	5.2	4.6	4.8	4.4	3.8	5.8	6.9	5.8	5.6	5.8	6.1	7.3	8.3	5.2	5.8	6.4	7.1	6.5	7.0	6.8
県支出金	4.0	3.6	3.4	3.0	3.0	2.6	2.5	2.8	3.3	3.8	4.9	6.5	6.3	3.4	3.6	3.8	4.0	3.9	3.7	3.6	4.1	4.6
繰入金	1.0	0.0	0.8	1.4	1.3	2.2	4.5	1.5	2.7	2.5	1.8	2.1	3.7	3.2	2.6	1.5	1.4	1.5	2.6	2.2	2.0	0.2
地方債	7.0	6.7	5.2	4.2	5.7	8.3	10.1	13.3	15.3	19.7	15.9	11.2	10.5	6.7	4.9	3.0	5.1	5.2	7.9	6.1	6.8	9.3
諸収入	15.7	14.6	14.2	14.8	13.3	13.1	13.1	13.8	12.2	13.4	14.3	12.6	12.0	10.6	8.4	7.8	7.2	7.5	8.2	8.0	7.8	8.2
その他	6.9	7.9	7.4	7.9	10.0	11.1	10.3	8.5	8.6	8.4	9.1	8.1	7.4	5.9	9.2	10.1	9.9	8.7	8.2	8.9	10.8	11.1
歳入合計	100.0	100.0	100.0	100.0	100.0	100.0	100.0	100.0	100.0	100.0	100.0	100.0	100.0	100.0	100.0	100.0	100.0	100.0	100.0	96.6	107.9	110.4

★入力の注意 黄色の入力セル。ここに数値を入力してください。
 青色のセルには関数等が入っていますので、入力等しないでください。

ⅢA-2 歳入決算額の構成額の推移



ⅢA-3 歳入決算額の構成比の推移



■ 地方税
 ■ 地方消費税交付金
 ■ 地方交付税
 ■ 分担金・負担金
 ■ 使用料
 ■ 国庫支出金
 ■ 県支出金
 ■ 繰入金
 ■ 地方債
 ■ 諸収入
 ■ その他

市町村名 **大垣市**

注意:S60の数値はダミーです。そのまま数値を上書きくだ; 単位:百万円

年度	S60	S61	S62	S63	H1	H2	H3	H4	H5	H6	H7	H8	H9	H10	H11	H12	H13	H14	H15	H16	H17	H18
区分	85	86	87	88	89	90	91	92	93	94	95	96	97	98	99	00	01	02	03	04	05	06
総務費	3,195	2,626	2,994	3,261	4,172	4,445	4,210	5,088	4,158	4,602	4,933	5,746	5,656	5,683	5,957	6,440	6,398	4,935	5,256	4,170	5,309	4,759
民生費	2,376	2,560	2,610	2,605	3,193	3,379	3,839	4,166	4,455	4,653	4,788	5,521	5,592	5,637	5,774	5,494	5,477	5,810	6,057	6,535	7,817	8,273
衛生費	1,588	1,951	2,390	1,792	1,982	2,214	2,953	2,455	3,029	3,113	2,824	2,708	2,754	2,870	2,720	2,776	2,823	2,899	3,071	3,046	3,243	3,202
農林水産	1,401	1,251	1,123	1,212	1,096	1,131	1,175	1,192	1,448	1,259	1,163	1,118	1,094	1,107	961	901	673	612	568	547	762	630
商工費	378	278	295	269	373	481	519	708	540	505	780	644	537	421	714	568	563	462	468	497	527	515
土木費	5,479	6,112	6,210	6,654	7,112	7,928	7,578	7,483	8,139	8,757	8,064	6,937	7,238	7,255	6,970	5,961	6,119	6,107	6,276	5,914	5,443	5,647
消防費	632	699	753	757	839	959	1,024	1,117	1,128	1,173	1,369	1,305	1,338	1,402	1,440	1,448	1,464	1,454	1,500	1,432	1,713	1,653
教育費	3,209	3,293	3,899	5,597	5,089	5,288	5,653	6,001	5,847	5,333	5,357	5,281	5,529	5,677	5,331	5,181	4,948	5,014	4,799	4,692	5,213	5,311
公債費	1,374	1,379	1,470	1,529	1,624	1,693	1,843	2,077	2,503	3,050	3,632	4,266	4,924	5,661	6,095	6,230	6,339	6,335	6,236	6,213	6,498	6,225
その他	427	461	471	476	533	567	542	587	615	635	641	880	713	790	651	630	614	622	575	565	641	559
歳出合計	20,059	20,610	22,215	24,152	26,013	28,085	29,336	30,874	31,862	33,080	33,551	34,406	35,375	36,503	36,613	35,629	35,418	34,250	34,806	33,611	37,166	36,774

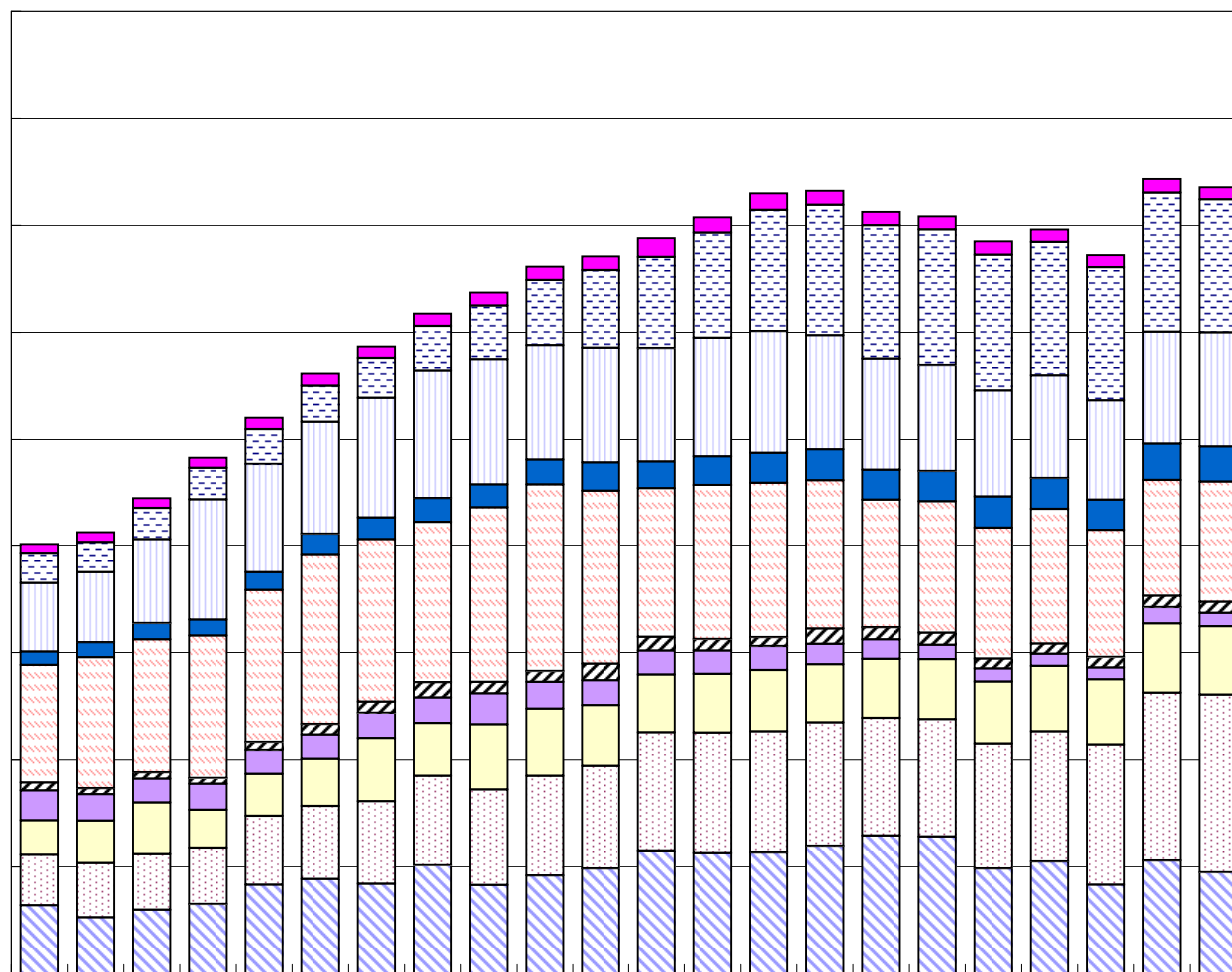
年度	S60	S61	S62	S63	H1	H2	H3	H4	H5	H6	H7	H8	H9	H10	H11	H12	H13	H14	H15	H16	H17	H18
区分	85	86	87	88	89	90	91	92	93	94	95	96	97	98	99	00	01	02	03	04	05	06
総務費	15.9%	12.7%	13.5%	13.5%	16.0%	15.8%	14.4%	16.5%	13.1%	13.9%	14.7%	16.7%	16.0%	15.6%	16.3%	18.1%	18.1%	14.4%	15.1%	12.4%	14.3%	12.9%
民生費	11.8%	12.4%	11.7%	10.8%	12.3%	12.0%	13.1%	13.5%	14.0%	14.1%	14.3%	16.0%	15.8%	15.4%	15.8%	15.4%	15.5%	17.0%	17.4%	19.4%	21.0%	22.5%
衛生費	7.9%	9.5%	10.8%	7.4%	7.6%	7.9%	10.1%	8.0%	9.5%	9.4%	8.4%	7.9%	7.8%	7.9%	7.4%	7.8%	8.0%	8.5%	8.8%	9.1%	8.7%	8.7%
農林水産	7.0%	6.1%	5.1%	5.0%	4.2%	4.0%	4.0%	3.9%	4.5%	3.8%	3.5%	3.2%	3.1%	3.0%	2.6%	2.5%	1.9%	1.8%	1.6%	1.6%	2.1%	1.7%
商工費	1.9%	1.3%	1.3%	1.1%	1.4%	1.7%	1.8%	2.3%	1.7%	1.5%	2.3%	1.9%	1.5%	1.2%	2.0%	1.6%	1.6%	1.3%	1.3%	1.5%	1.4%	1.4%
土木費	27.3%	29.7%	28.0%	27.6%	27.3%	28.2%	25.8%	24.2%	25.5%	26.5%	24.0%	20.2%	20.5%	19.9%	19.0%	16.7%	17.3%	17.8%	18.0%	17.6%	14.6%	15.4%
消防費	3.2%	3.4%	3.4%	3.1%	3.2%	3.4%	3.5%	3.6%	3.5%	3.5%	4.1%	3.8%	3.8%	3.8%	3.9%	4.1%	4.1%	4.2%	4.3%	4.3%	4.6%	4.5%
教育費	16.0%	16.0%	17.6%	23.2%	19.6%	18.8%	19.3%	19.4%	18.4%	16.1%	16.0%	15.3%	15.6%	15.6%	14.6%	14.5%	14.0%	14.6%	13.8%	14.0%	14.0%	14.4%
公債費	6.8%	6.7%	6.6%	6.3%	6.2%	6.0%	6.3%	6.7%	7.9%	9.2%	10.8%	12.4%	13.9%	15.5%	16.6%	17.5%	17.9%	18.5%	17.9%	18.5%	17.5%	16.9%
その他	2.1%	2.2%	2.1%	2.0%	2.0%	2.0%	1.8%	1.9%	1.9%	1.9%	1.9%	2.6%	2.0%	2.2%	1.8%	1.8%	1.7%	1.8%	1.7%	1.7%	1.7%	1.5%
歳出合計	100.0%	100.0%	100.0%	100.0%	100.0%	100.0%	100.0%	100.0%	100.0%	100.0%	100.0%	100.0%	100.0%	100.0%	100.0%	100.0%	100.0%	100.0%	100.0%	100.0%	100.0%	100.0%

★入力の注意 黄色の入力セル。ここに数値を入力してください。
 青色のセルには関数等が入っていますので、入力等しないでください。

IVB-2 目的別歳出・充当一般財源額の推移

百万円

45,000
40,000
35,000
30,000
25,000
20,000
15,000
10,000
5,000
0

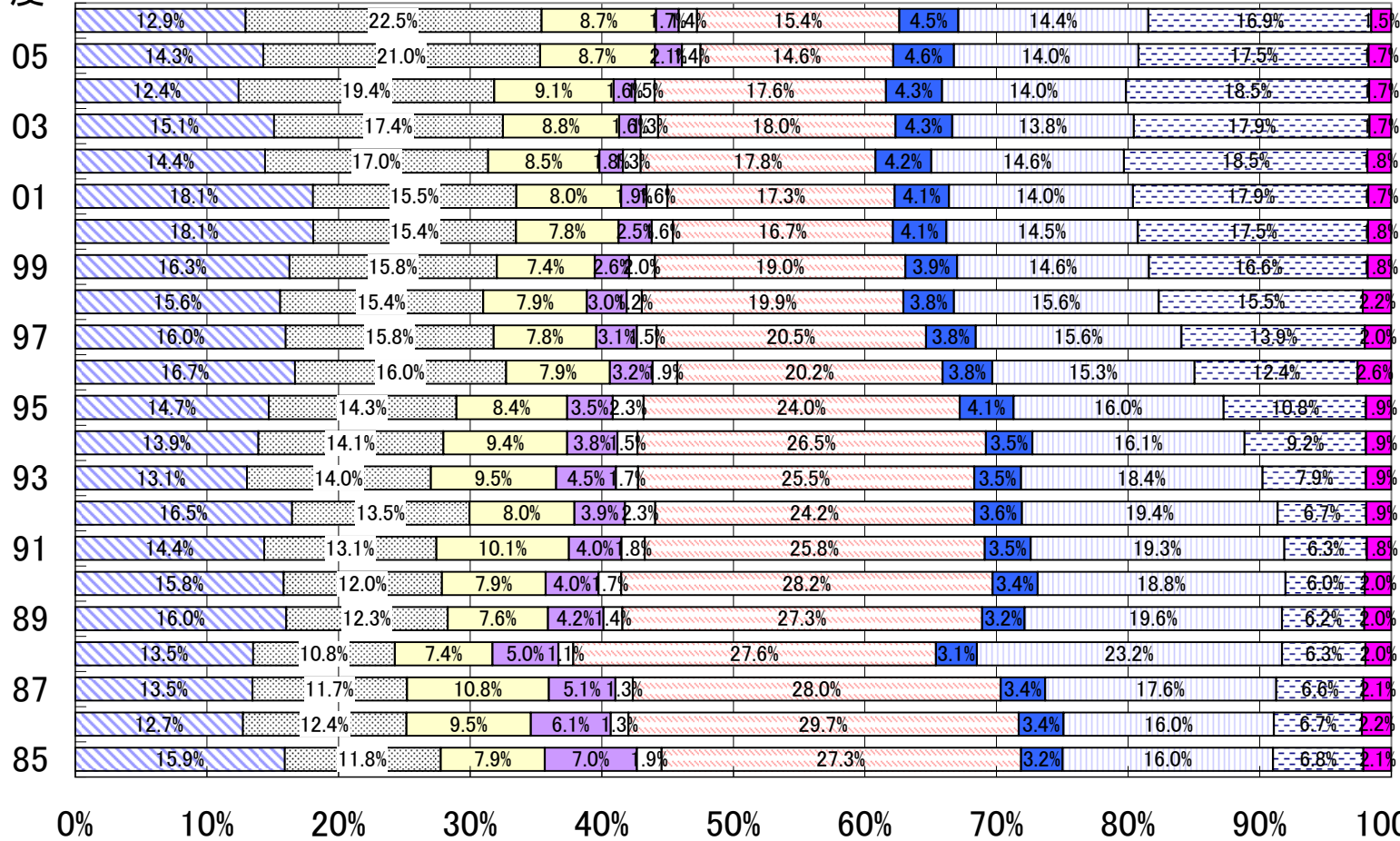


- その他
- ▨ 公債費
- 教育費
- 消防費
- ▨ 土木費
- ▨ 商工費
- 農林水産業費
- 衛生費
- ▨ 民生費
- ▨ 総務費

85 86 87 88 89 90 91 92 93 94 95 96 97 98 99 00 01 02 03 04 05 06 年度

IVB-3 目的別歳出・充当一般財源比率の推移

年度



総務費
 民生費
 衛生費
 農林水産業費
 商工費
 土木費
 消防費
 教育費
 公債費

IVC 性質別歳出の科目順位と推移市町村名

大垣市	
-----	--

注意: S60の数値はダミーです。そのまま数値を上書きください。

単位: 百万円

年度	S60	S61	S62	S63	H1	H2	H3	H4	H5	H6	H7	H8	H9	H10	H11	H12	H13	H14	H15	H16	H17	H18
区分	85	86	87	88	89	90	91	92	93	94	95	96	97	98	99	00	01	02	03	04	05	06
人件費	6,771	6,871	7,346	7,644	8,252	8,868	8,901	9,467	9,564	9,721	10,279	10,760	10,625	10,655	10,797	11,091	10,371	10,209	10,111	9,623	10,932	10,737
扶助費	2,038	2,205	2,259	2,246	2,378	2,333	2,380	2,704	2,825	2,904	3,099	3,363	3,823	4,092	4,348	4,071	4,410	4,821	5,534	5,902	6,609	7,415
公債費	1,507	1,514	1,622	1,690	1,783	1,860	2,012	2,247	2,935	3,387	3,806	4,439	5,084	5,798	6,284	6,389	6,507	6,512	6,410	6,368	6,660	6,365
物件費	1,979	2,126	2,273	2,558	2,765	3,363	4,178	4,815	5,254	5,425	6,068	6,318	6,748	7,287	7,225	5,945	5,948	6,151	5,830	5,917	7,018	6,195
補助費等	1,638	1,856	2,017	2,388	2,584	2,901	2,939	3,663	3,572	3,826	3,910	4,118	4,205	4,508	5,097	4,389	4,143	4,189	4,140	3,929	4,544	4,357
繰出金	1,647	1,821	1,768	2,211	1,991	2,006	2,147	2,442	2,723	3,056	3,037	2,953	3,167	3,258	3,439	4,112	4,310	4,587	4,768	4,734	4,807	5,060
積立金	201	433	721	1,626	1,352	1,018	1,523	1,555	268	775	1,125	1,291	1,556	1,155	2,400	1,435	1,729	335	620	24	9	743
投資的経	10,016	9,384	9,448	9,027	11,374	13,537	15,897	16,662	20,506	21,308	18,028	13,726	15,203	9,670	8,566	5,727	6,368	5,369	5,164	4,527	5,853	6,055
その他	3,735	3,864	4,266	4,220	4,119	4,469	4,804	4,638	5,299	5,342	5,215	5,133	4,941	3,938	3,852	3,734	3,468	3,440	3,955	3,970	3,743	3,893
歳出合計	29,532	30,074	31,720	33,610	36,598	40,355	44,781	48,193	52,946	55,744	54,567	52,101	55,352	50,361	52,008	46,893	47,254	45,613	46,532	44,994	50,175	50,820

年度	S60	S61	S62	S63	H1	H2	H3	H4	H5	H6	H7	H8	H9	H10	H11	H12	H13	H14	H15	H16	H17	H18
区分	85	86	87	88	89	90	91	92	93	94	95	96	97	98	99	00	01	02	03	04	05	06
人件費	22.9%	22.8%	23.2%	22.7%	22.5%	22.0%	19.9%	19.6%	18.1%	17.4%	18.8%	20.7%	19.2%	21.2%	20.8%	23.7%	21.9%	22.4%	21.7%	21.4%	21.8%	21.1%
扶助費	6.9%	7.3%	7.1%	6.7%	6.5%	5.8%	5.3%	5.6%	5.3%	5.2%	5.7%	6.5%	6.9%	8.1%	8.4%	8.7%	9.3%	10.6%	11.9%	13.1%	13.2%	14.6%
公債費	5.1%	5.0%	5.1%	5.0%	4.9%	4.6%	4.5%	4.7%	5.5%	6.1%	7.0%	8.5%	9.2%	11.5%	12.1%	13.6%	13.8%	14.3%	13.8%	14.2%	13.3%	12.5%
物件費	6.7%	7.1%	7.2%	7.6%	7.6%	8.3%	9.3%	10.0%	9.9%	9.7%	11.1%	12.1%	12.2%	14.5%	13.9%	12.7%	12.6%	13.5%	12.5%	13.2%	14.0%	12.2%
補助費等	5.5%	6.2%	6.4%	7.1%	7.1%	7.2%	6.6%	7.6%	6.7%	6.9%	7.2%	7.9%	7.6%	9.0%	9.8%	9.4%	8.8%	9.2%	8.9%	8.7%	9.1%	8.6%
繰出金	5.6%	6.1%	5.6%	6.6%	5.4%	5.0%	4.8%	5.1%	5.1%	5.5%	5.6%	5.7%	5.7%	6.5%	6.6%	8.8%	9.1%	10.1%	10.2%	10.5%	9.6%	10.0%
積立金	0.7%	1.4%	2.3%	4.8%	3.7%	2.5%	3.4%	3.2%	0.5%	1.4%	2.1%	2.5%	2.8%	2.3%	4.6%	3.1%	3.7%	0.7%	1.3%	0.1%	0.0%	1.5%
投資的経	33.9%	31.2%	29.8%	26.9%	31.1%	33.5%	35.5%	34.6%	38.7%	38.2%	33.0%	26.3%	27.5%	19.2%	16.5%	12.2%	13.5%	11.8%	11.1%	10.1%	11.7%	11.9%
その他	12.6%	12.8%	13.4%	12.6%	11.3%	11.1%	10.7%	9.6%	10.0%	9.6%	9.6%	9.9%	8.9%	7.8%	7.4%	8.0%	7.3%	7.5%	8.5%	8.8%	7.5%	7.7%
歳出合計	100.0%	100.0%	100.0%	100.0%	100.0%	100.0%	100.0%	100.0%	100.0%	100.0%	100.0%	100.0%	100.0%	100.0%	100.0%	100.0%	100.0%	100.0%	100.0%	100.0%	100.0%	100.0%

★入力の注意

黄色

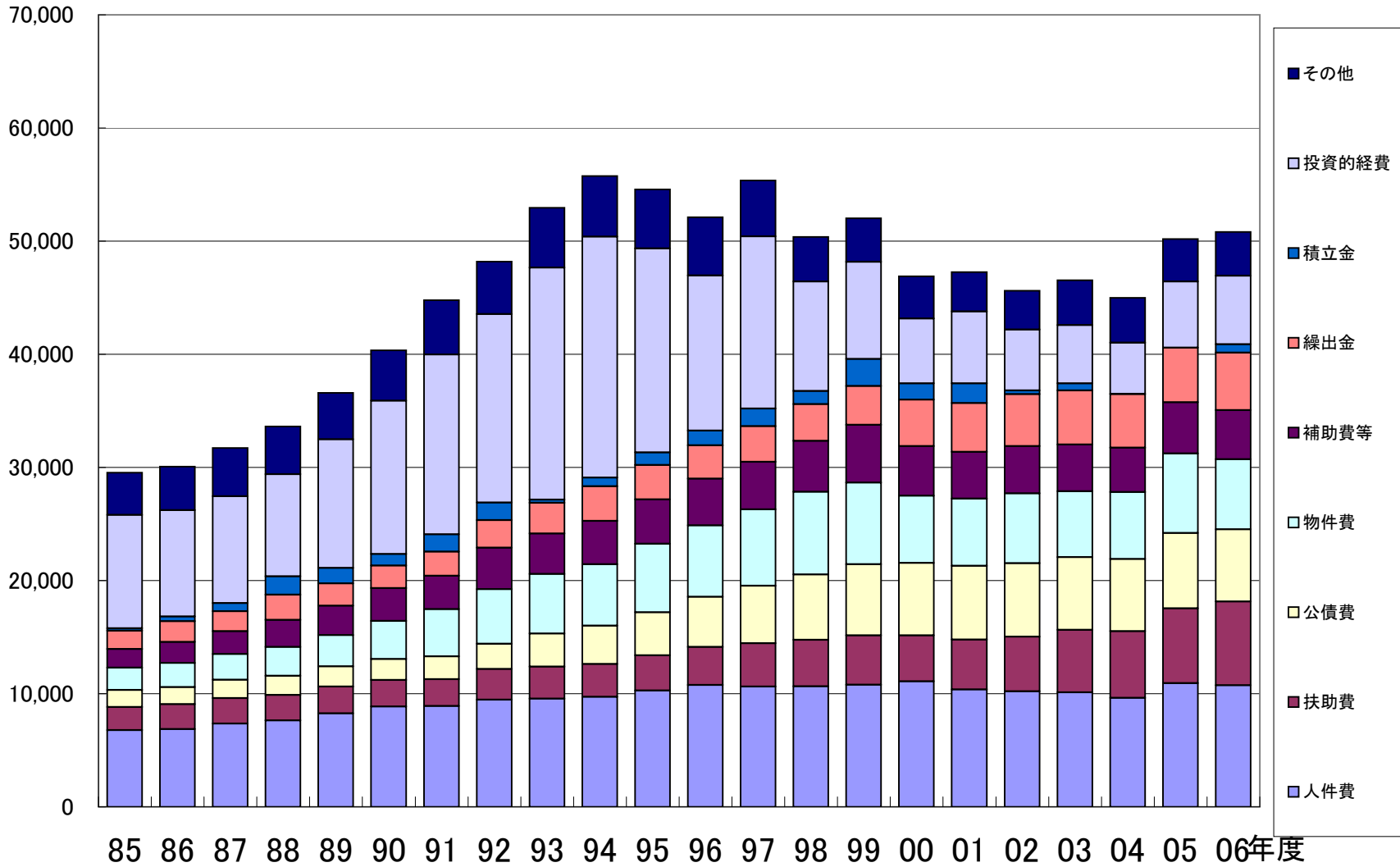
 黄色の入力セル。ここに数値を入力してください。

青色

 青色のセルには関数等が入っていますので、入力等しないでください。

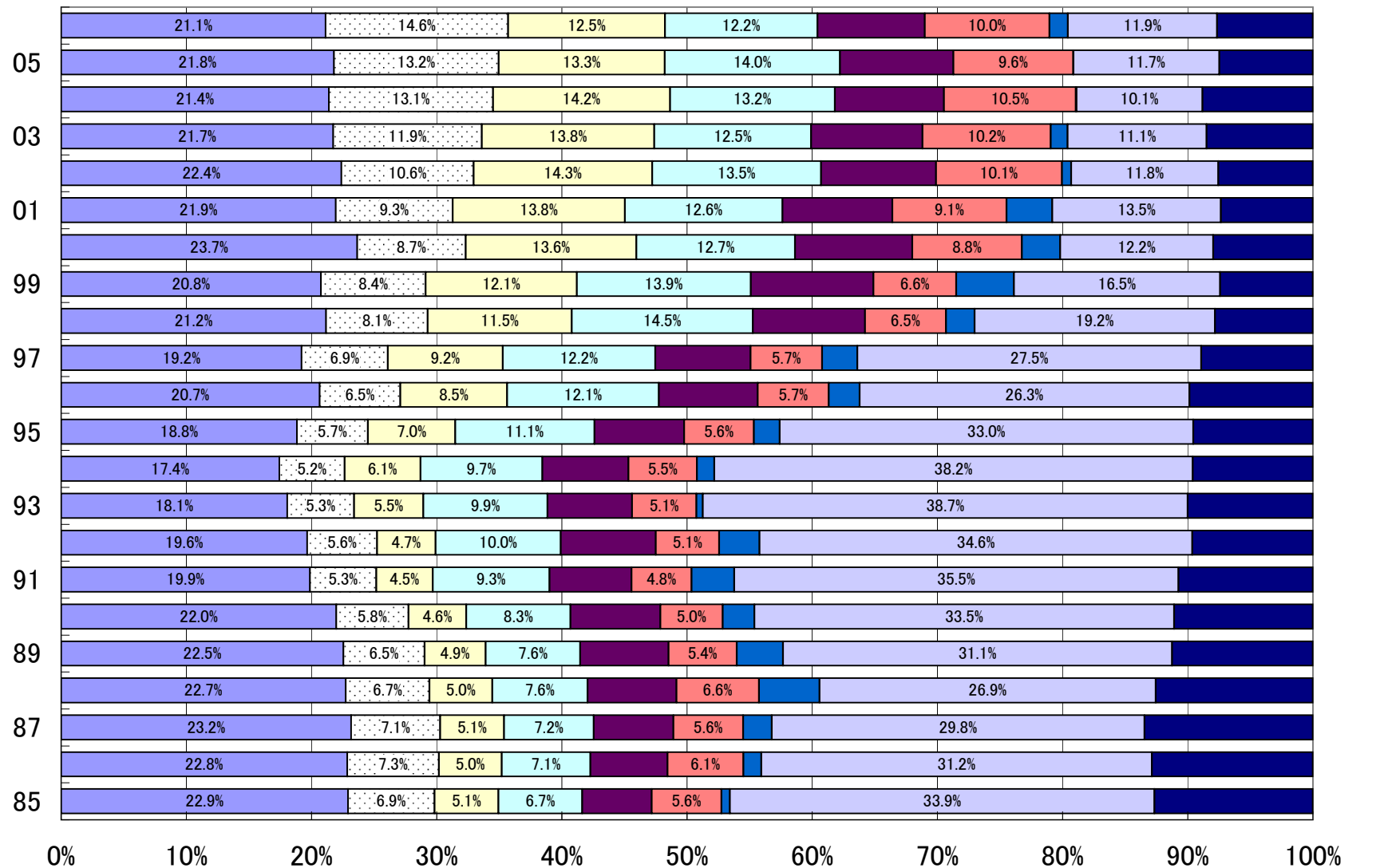
IVC-2 性質別歳出額の推移

百万円



年度

IVC-3 性質別歳出比率の推移



人件費
 扶助費
 公債費
 物件費
 補助費等
 繰出金
 積立金
 投資的経費