

市町村名 **大垣市**

注意: S60の数値はダミーです。そのまま数値を上書きください。単位: 百万円

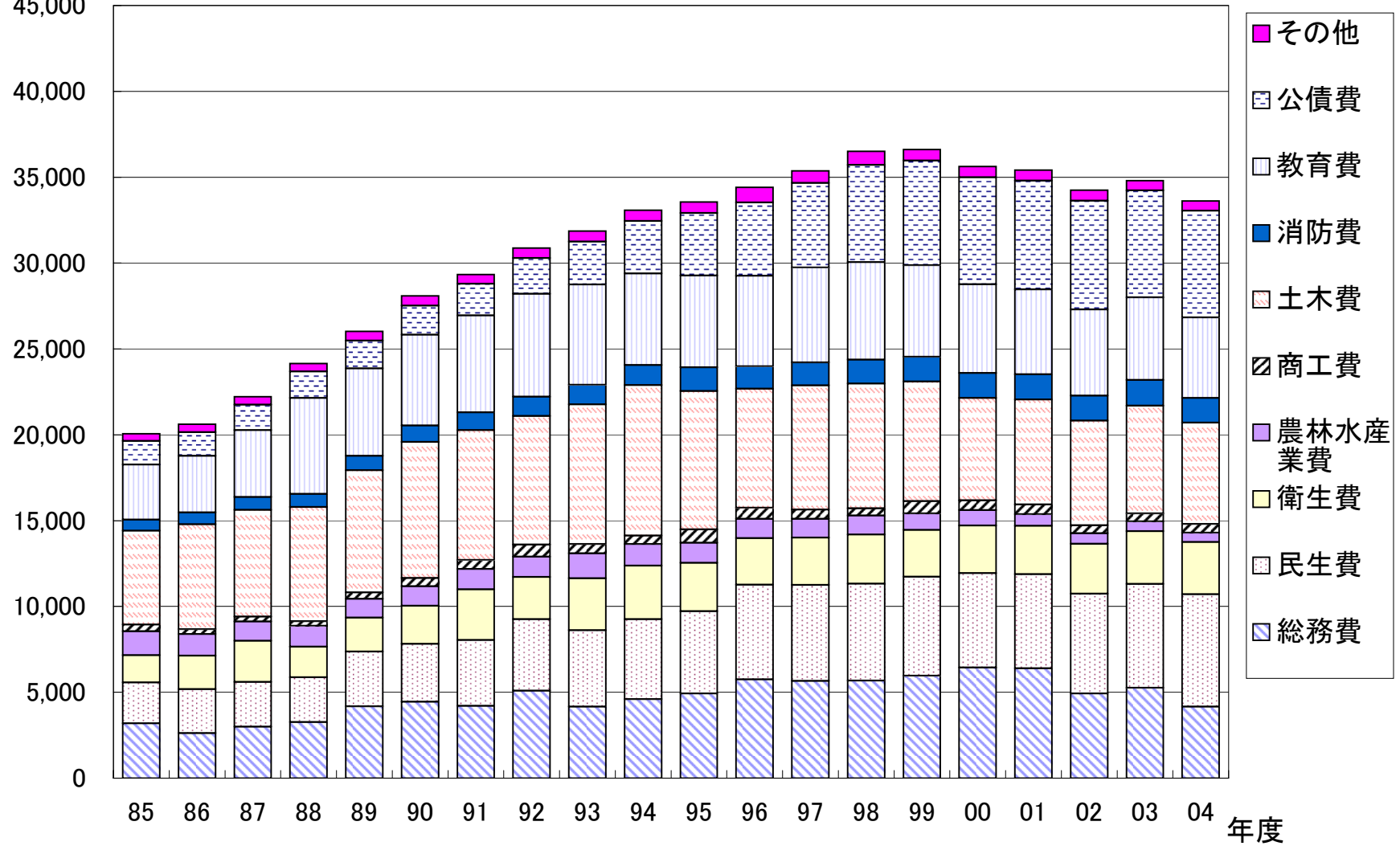
年度	S60	S61	S62	S63	H1	H2	H3	H4	H5	H6	H7	H8	H9	H10	H11	H12	H13	H14	H15	H16
区分	85	86	87	88	89	90	91	92	93	94	95	96	97	98	99	00	01	02	03	04
総務費	3,195	2,626	2,994	3,261	4,172	4,445	4,210	5,088	4,158	4,602	4,933	5,746	5,656	5,683	5,957	6,440	6,398	4,935	5,256	4,170
民生費	2,376	2,560	2,610	2,605	3,193	3,379	3,839	4,166	4,455	4,653	4,788	5,521	5,592	5,637	5,774	5,494	5,477	5,810	6,057	6,535
衛生費	1,588	1,951	2,390	1,792	1,982	2,214	2,953	2,455	3,029	3,113	2,824	2,708	2,754	2,870	2,720	2,776	2,823	2,899	3,071	3,046
農林水産業費	1,401	1,251	1,123	1,212	1,096	1,131	1,175	1,192	1,448	1,259	1,163	1,118	1,094	1,107	961	901	673	612	568	547
商工費	378	278	295	269	373	481	519	708	540	505	780	644	537	421	714	568	563	462	468	497
土木費	5,479	6,112	6,210	6,654	7,112	7,928	7,578	7,483	8,139	8,757	8,064	6,937	7,238	7,255	6,970	5,961	6,119	6,107	6,276	5,914
消防費	632	699	753	757	839	959	1,024	1,117	1,128	1,173	1,369	1,305	1,338	1,402	1,440	1,448	1,464	1,454	1,500	1,432
教育費	3,209	3,293	3,899	5,597	5,089	5,288	5,653	6,001	5,847	5,333	5,357	5,281	5,529	5,677	5,331	5,181	4,948	5,014	4,799	4,692
公債費	1,374	1,379	1,470	1,529	1,624	1,693	1,843	2,077	2,503	3,050	3,632	4,266	4,924	5,661	6,095	6,230	6,339	6,335	6,236	6,213
その他	427	461	471	476	533	567	542	587	615	635	641	880	713	790	651	630	614	622	575	565
歳出合計	20,059	20,610	22,215	24,152	26,013	28,085	29,336	30,874	31,862	33,080	33,551	34,406	35,375	36,503	36,613	35,629	35,418	34,250	34,806	33,611

年度	S60	S61	S62	S63	H1	H2	H3	H4	H5	H6	H7	H8	H9	H10	H11	H12	H13	H14	H15	H16
区分	85	86	87	88	89	90	91	92	93	94	95	96	97	98	99	00	01	02	03	04
総務費	15.9%	12.7%	13.5%	13.5%	16.0%	15.8%	14.4%	16.5%	13.1%	13.9%	14.7%	16.7%	16.0%	15.6%	16.3%	18.1%	18.1%	14.4%	15.1%	12.4%
民生費	11.8%	12.4%	11.7%	10.8%	12.3%	12.0%	13.1%	13.5%	14.0%	14.1%	14.3%	16.0%	15.8%	15.4%	15.8%	15.4%	15.5%	17.0%	17.4%	19.4%
衛生費	7.9%	9.5%	10.8%	7.4%	7.6%	7.9%	10.1%	8.0%	9.5%	9.4%	8.4%	7.9%	7.8%	7.9%	7.4%	7.8%	8.0%	8.5%	8.8%	9.1%
農林水産業費	7.0%	6.1%	5.1%	5.0%	4.2%	4.0%	4.0%	3.9%	4.5%	3.8%	3.5%	3.2%	3.1%	3.0%	2.6%	2.5%	1.9%	1.8%	1.6%	1.6%
商工費	1.9%	1.3%	1.3%	1.1%	1.4%	1.7%	1.8%	2.3%	1.7%	1.5%	2.3%	1.9%	1.5%	1.2%	2.0%	1.6%	1.6%	1.3%	1.3%	1.5%
土木費	27.3%	29.7%	28.0%	27.6%	27.3%	28.2%	25.8%	24.2%	25.5%	26.5%	24.0%	20.2%	20.5%	19.9%	19.0%	16.7%	17.3%	17.8%	18.0%	17.6%
消防費	3.2%	3.4%	3.4%	3.1%	3.2%	3.4%	3.5%	3.6%	3.5%	3.5%	4.1%	3.8%	3.8%	3.8%	3.9%	4.1%	4.1%	4.2%	4.3%	4.3%
教育費	16.0%	16.0%	17.6%	23.2%	19.6%	18.8%	19.3%	19.4%	18.4%	16.1%	16.0%	15.3%	15.6%	15.6%	14.6%	14.5%	14.0%	14.6%	13.8%	14.0%
公債費	6.8%	6.7%	6.6%	6.3%	6.2%	6.0%	6.3%	6.7%	7.9%	9.2%	10.8%	12.4%	13.9%	15.5%	16.6%	17.5%	17.9%	18.5%	17.9%	18.5%
その他	2.1%	2.2%	2.1%	2.0%	2.0%	2.0%	1.8%	1.9%	1.9%	1.9%	1.9%	2.6%	2.0%	2.2%	1.8%	1.8%	1.7%	1.8%	1.7%	1.7%
歳出合計	100.0%	100.0%	100.0%	100.0%	100.0%	100.0%	100.0%	100.0%	100.0%	100.0%	100.0%	100.0%	100.0%	100.0%	100.0%	100.0%	100.0%	100.0%	100.0%	100.0%

★入力の注意 黄色の入力セル。ここに数値を入力してください。
 青色のセルには関数等が入っていますので、入力等しないでください。

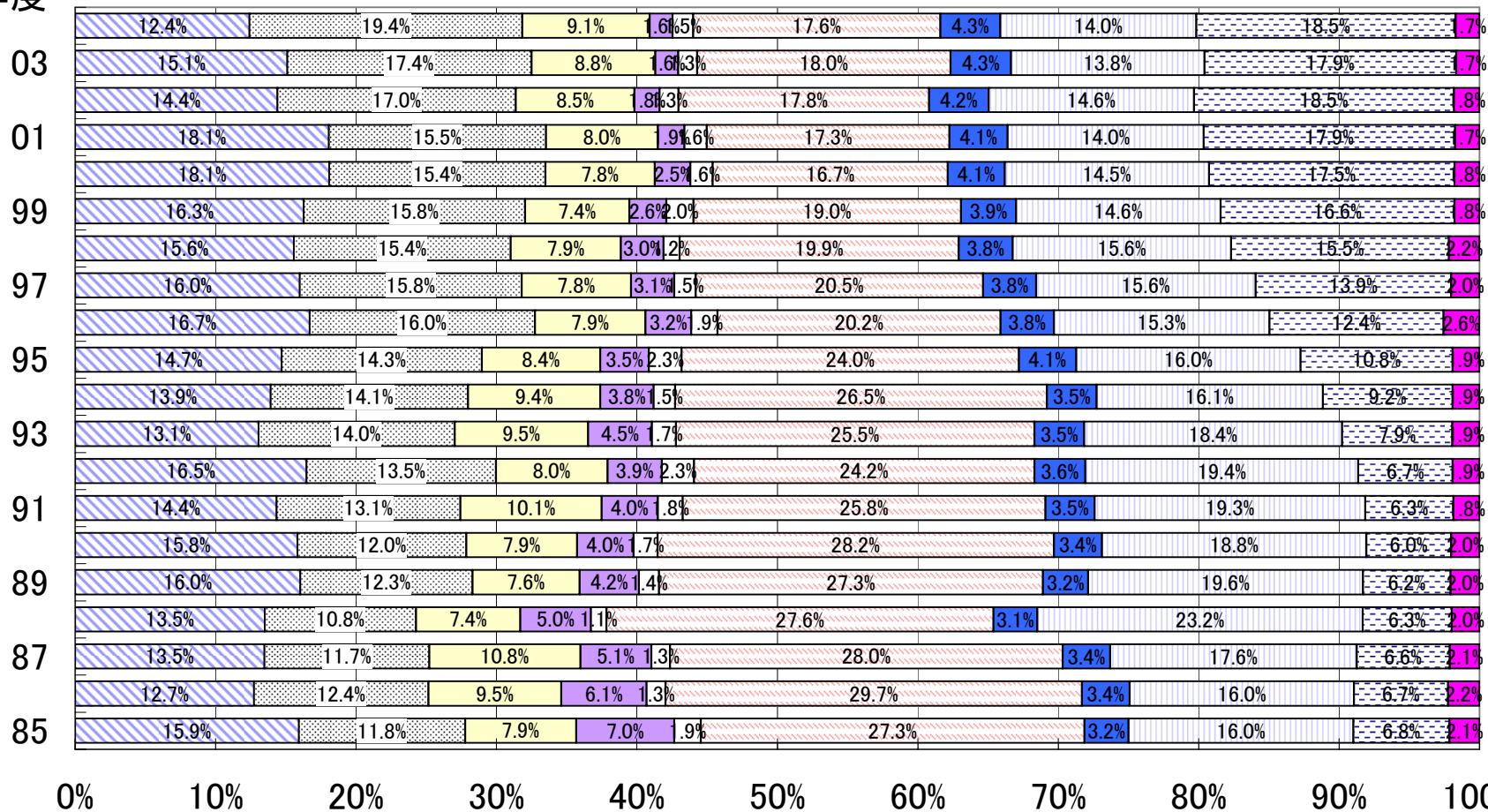
IVB-2 目的別歳出・充当一般財源額の推移

百万円
45,000



IVB-3 目的別歳出・充当一般財源比率の推移

年度



総務費
 民生費
 衛生費
 農林水産業費
 商工費
 土木費
 消防費
 教育費
 公債費
 その他