

IVC 性質別歳出の科目順位と推移

市町村名

大垣市

注意：S60の数値はダミーです。そのまま数値を上書きください。

単位：百万円

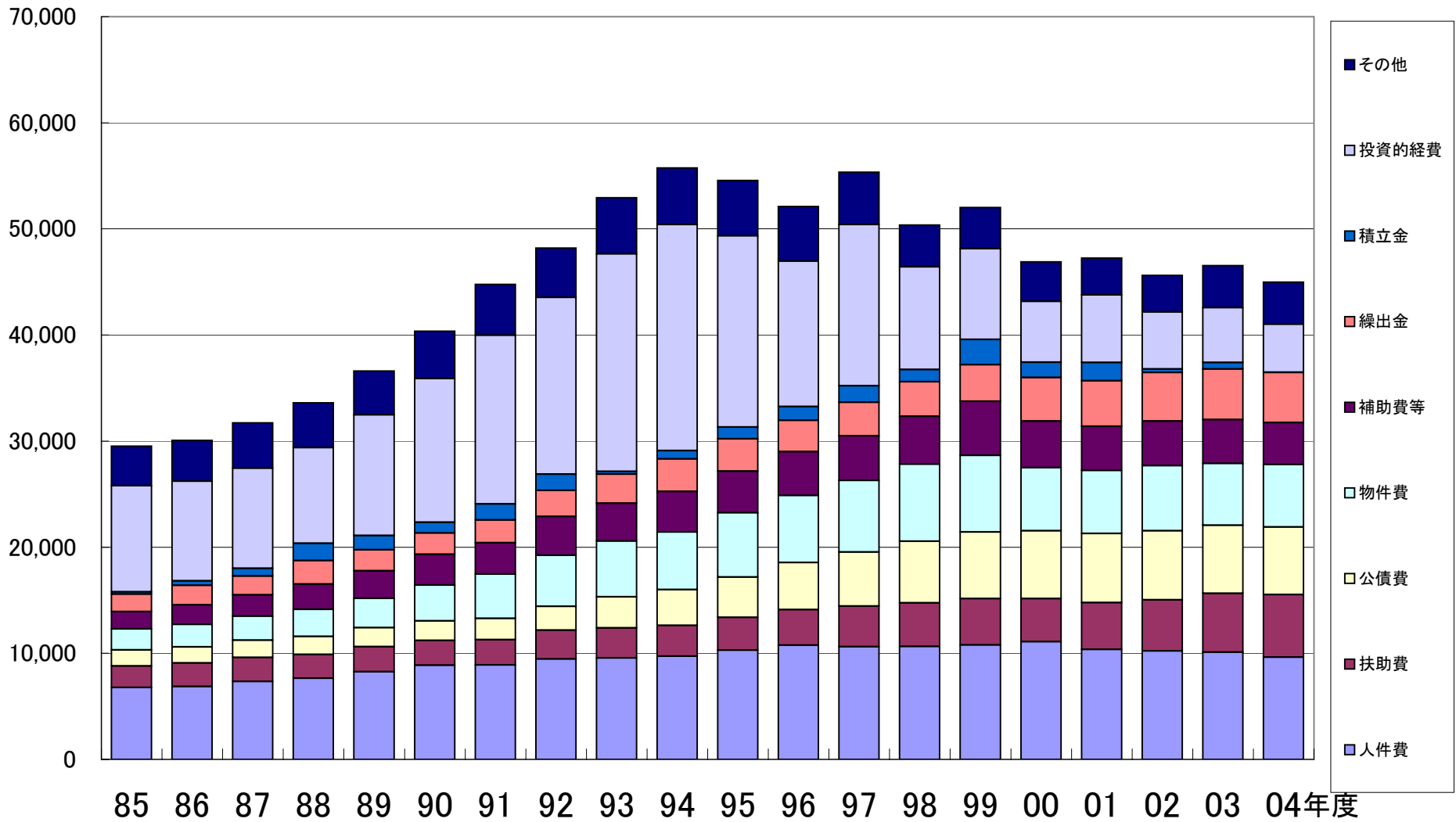
年度	S60	S61	S62	S63	H1	H2	H3	H4	H5	H6	H7	H8	H9	H10	H11	H12	H13	H14	H15	H16
区分	85	86	87	88	89	90	91	92	93	94	95	96	97	98	99	00	01	02	03	04
人件費	6,771	6,871	7,346	7,644	8,252	8,868	8,901	9,467	9,564	9,721	10,279	10,760	10,625	10,655	10,797	11,091	10,371	10,209	10,111	9,623
扶助費	2,038	2,205	2,259	2,246	2,378	2,333	2,380	2,704	2,825	2,904	3,099	3,363	3,823	4,092	4,348	4,071	4,410	4,821	5,534	5,902
公債費	1,507	1,514	1,622	1,690	1,783	1,860	2,012	2,247	2,935	3,387	3,806	4,439	5,084	5,798	6,284	6,389	6,507	6,512	6,410	6,368
物件費	1,979	2,126	2,273	2,558	2,765	3,363	4,178	4,815	5,254	5,425	6,068	6,318	6,748	7,287	7,225	5,945	5,948	6,151	5,830	5,917
補助費等	1,638	1,856	2,017	2,388	2,584	2,901	2,939	3,663	3,572	3,826	3,910	4,118	4,205	4,508	5,097	4,389	4,143	4,189	4,140	3,929
繰出金	1,647	1,821	1,768	2,211	1,991	2,006	2,147	2,442	2,723	3,056	3,037	2,953	3,167	3,258	3,439	4,112	4,310	4,587	4,768	4,734
積立金	201	433	721	1,626	1,352	1,018	1,523	1,555	268	775	1,125	1,291	1,556	1,155	2,400	1,435	1,729	335	620	24
投資的経費	10,016	9,384	9,448	9,027	11,374	13,537	15,897	16,662	20,506	21,308	18,028	13,726	15,203	9,670	8,566	5,727	6,368	5,369	5,164	4,527
その他	3,735	3,864	4,266	4,220	4,119	4,469	4,804	4,638	5,299	5,342	5,215	5,133	4,941	3,938	3,852	3,734	3,468	3,440	3,955	3,970
歳出合計	29,532	30,074	31,720	33,610	36,598	40,355	44,781	48,193	52,946	55,744	54,567	52,101	55,352	50,361	52,008	46,893	47,254	45,613	46,532	44,994

年度	S60	S61	S62	S63	H1	H2	H3	H4	H5	H6	H7	H8	H9	H10	H11	H12	H13	H14	H15	H16
区分	85	86	87	88	89	90	91	92	93	94	95	96	97	98	99	00	01	02	03	04
人件費	22.9%	22.8%	23.2%	22.7%	22.5%	22.0%	19.9%	19.6%	18.1%	17.4%	18.8%	20.7%	19.2%	21.2%	20.8%	23.7%	21.9%	22.4%	21.7%	21.4%
扶助費	6.9%	7.3%	7.1%	6.7%	6.5%	5.8%	5.3%	5.6%	5.3%	5.2%	5.7%	6.5%	6.9%	8.1%	8.4%	8.7%	9.3%	10.6%	11.9%	13.1%
公債費	5.1%	5.0%	5.1%	5.0%	4.9%	4.6%	4.5%	4.7%	5.5%	6.1%	7.0%	8.5%	9.2%	11.5%	12.1%	13.6%	13.8%	14.3%	13.8%	14.2%
物件費	6.7%	7.1%	7.2%	7.6%	7.6%	8.3%	9.3%	10.0%	9.9%	9.7%	11.1%	12.1%	12.2%	14.5%	13.9%	12.7%	12.6%	13.5%	12.5%	13.2%
補助費等	5.5%	6.2%	6.4%	7.1%	7.1%	7.2%	6.6%	7.6%	6.7%	6.9%	7.2%	7.9%	7.6%	9.0%	9.8%	9.4%	8.8%	9.2%	8.9%	8.7%
繰出金	5.6%	6.1%	5.6%	6.6%	5.4%	5.0%	4.8%	5.1%	5.1%	5.5%	5.6%	5.7%	5.7%	6.5%	6.6%	8.8%	9.1%	10.1%	10.2%	10.5%
積立金	0.7%	1.4%	2.3%	4.8%	3.7%	2.5%	3.4%	3.2%	0.5%	1.4%	2.1%	2.5%	2.8%	2.3%	4.6%	3.1%	3.7%	0.7%	1.3%	0.1%
投資的経費	33.9%	31.2%	29.8%	26.9%	31.1%	33.5%	35.5%	34.6%	38.7%	38.2%	33.0%	26.3%	27.5%	19.2%	16.5%	12.2%	13.5%	11.8%	11.1%	10.1%
その他	12.6%	12.8%	13.4%	12.6%	11.3%	11.1%	10.7%	9.6%	10.0%	9.6%	9.6%	9.9%	8.9%	7.8%	7.4%	8.0%	7.3%	7.5%	8.5%	8.8%
歳出合計	100.0%	100.0%	100.0%	100.0%	100.0%	100.0%	100.0%	100.0%	100.0%	100.0%	100.0%	100.0%	100.0%	100.0%	100.0%	100.0%	100.0%	100.0%	100.0%	100.0%

★入力の注意 黄色の入力セル。ここに数値を入力してください。
 青色のセルには関数等が入っていますので、入力等しないでください。

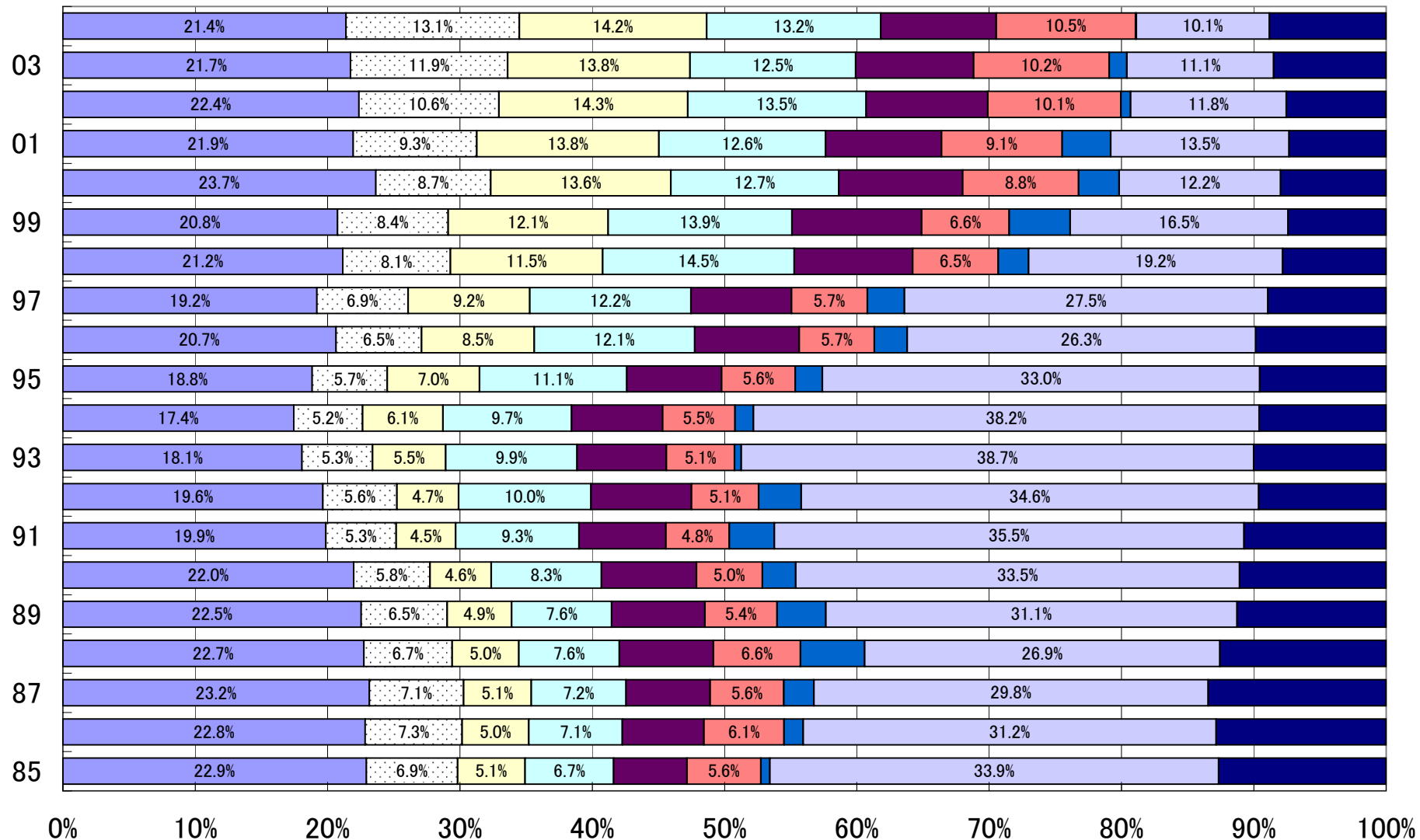
IVC-2 性質別歳出額の推移

百万円



年度

IVC-3 性質別歳出比率の推移



人件費
 扶助費
 公債費
 物件費
 補助費等
 繰出金
 積立金
 投資的経費
 その他